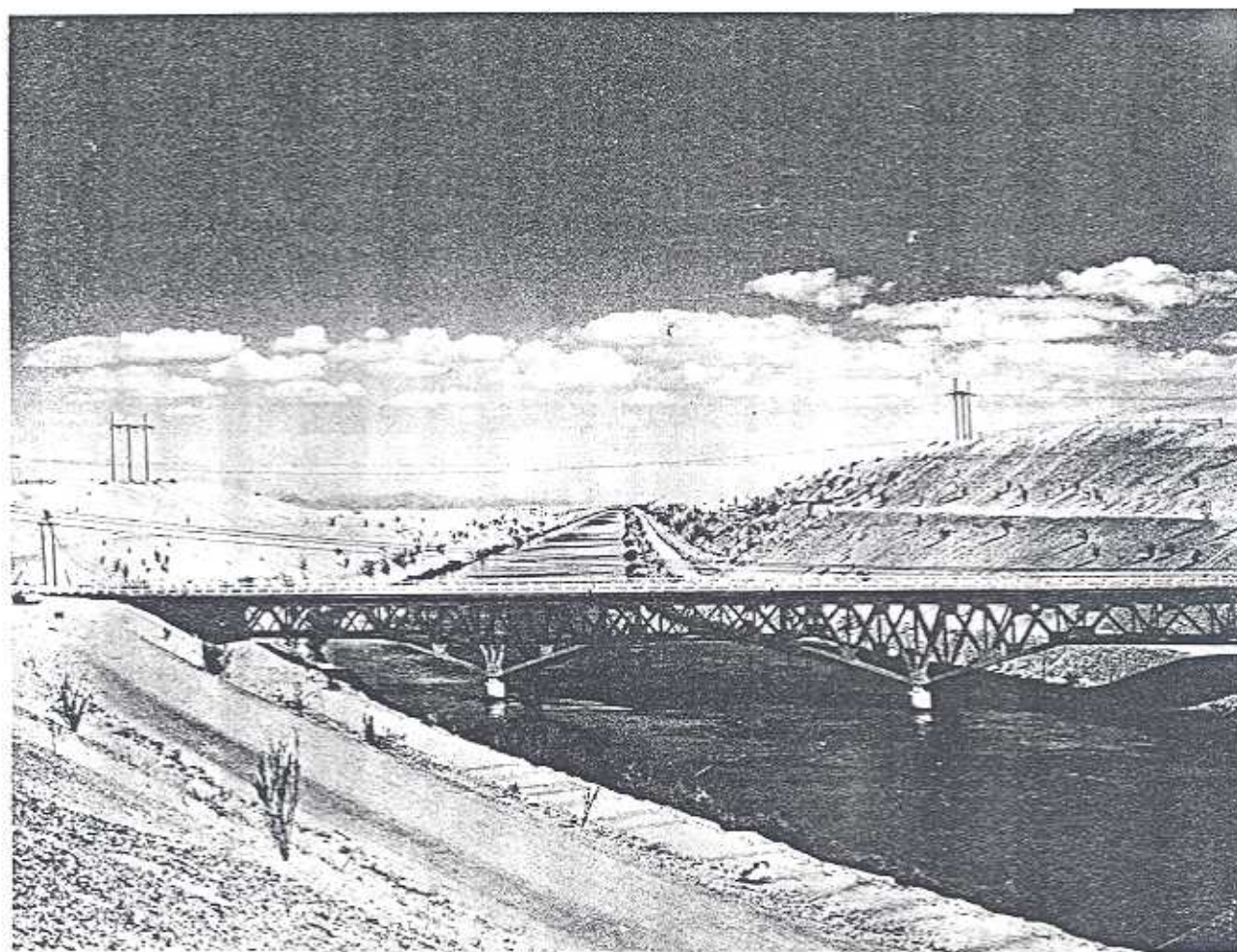


Agricultural Crop Report

COUNTY OF IMPERIAL

- 1959 -



*Office of the
Agricultural Commissioner*

Court House - El Centro



TO: THE HONORABLE BOARD OF SUPERVISORS

and

W. E. WARNE, DIRECTOR OF AGRICULTURE

I herewith submit the annual report on the gross value of agricultural production in the County of Imperial for 1959 as required in Section 65.5 of the Agricultural Code.

The gross value of agricultural production in Imperial County during the year of 1959 was \$137,695,613.00, showing an increase over the 1958 value of \$130,837,346.00.

The gross income shown in this report does not take into consideration the cost of production, and is not intended to reflect net profit to the farmer.

This report does indicate, however, the amount of new wealth generated in Imperial County by the agricultural industry in the past year.

This office is sincerely grateful to those who made this report possible by supplying factual information.

Respectfully submitted,

A handwritten signature in cursive script that reads 'Claude M. Finnell'.

CLAUDE M. FINNELL

Agricultural Commissioner

IMPERIAL COUNTY BOARD OF SUPERVISORS

SI CAREY, Chairman

TOM BOLEY

EARL CAVANAH

PAUL GILLET

RAY LANGLEY

VEGETABLE CROPS - ACREAGE - PRODUCTION - VALUE

1958 - 1959

	Acreage	Production	Unit	Per Unit	Value
Asparagus		92,554	Crates	6.55	\$ 606,228
Broccoli	487	115,706	Crates	2.00	231,412
Cabbage	1,700	355,708	Crates	1.45	515,776
Carrots	5,722	715,013	Crates	2.25	1,608,779
Carrots - Processing		15,293	Tons	58.00	886,994
Sweet Corn		18,061	Crates	2.40	43,346
Cucumber	230	70,616	Crates	1.90	134,170
Egg Plant		35,096	Crates	1.65	57,908
Garlic	528	766	Tons	340.00	260,440
Garlic - Processing		1,903	Tons	170.00	323,510
Lettuce	36,270	11,891,840	Crates	1.60	19,026,944
Melons - Cantaloupe	6,463	775,760	Crates	5.50	4,266,680
Melons - Miscellaneous	16	3,816	Crates	4.00	15,264
Watermelons	4,330	43,300	Tons	52.50	2,273,250
Okra	49	128	Tons	260.00	33,280
Mustard Greens	111	29,970	Crates	2.50	74,925
Onions	855	334,122	Sacks	1.30	434,358
Onions - Dehydrated	600	10,208	Tons	26.00	265,408
Romaine		12,878	Crates	1.25	16,097
Squash	1,465	386,726	Crates	1.85	715,443
Misc. Vegetables	15	2,500	Crates	3.50	8,750
Tomatoes	3,232	1,830,954	Crates	1.50	2,746,431
Tomatoes		187,650	Lugs	2.35	440,977
Tomatoes - Cannery		2,227	Tons	24.00	53,448
TOTAL					\$35,039,818

APIARY PRODUCTS - PRODUCTION - VALUE - 1958-59

	Production	Unit	Per Unit	Value
Honey	1,901,250	Pounds	.09	\$171,112
Beeswax	25,450	Pounds	.44	11,154
Pkg. Bees	300	Packages	3.00 ea.	900
Royal Jelly	100	Pounds	48.00	4,800
Pollination	6,000	Colony	3.00	18,000
TOTAL				\$205,966

FIELD CROPS

Acreage - Production - Value - 1958-59

	Acreage	Total	Unit	Per Unit	Value
Barley	98,958	170,831	Tons	\$ 46.00	\$ 7,858,226
Cotton Lint	55,108	130,443	Bales	147.50	19,240,342
Cotton Seed		50,287	Tons	41.00	2,061,767
Flax Seed	33,156	1,359,396	Bushels	2.89	3,928,654
Hay (Alfalfa)	124,349	683,919	Tons	26.00	17,781,894
Meal & Pellets (Alfalfa)	7,680	42,181	Tons	46.00	1,940,326
Pastorage & Range (Irrigated)	30,054	(217,772 hd. Sheep @ \$ 4.20) (60,925 hd. Cattle @ 17.00)			1,950,367
Sorghum (Ensilage)	4,287	107,183	Tons	5.00	535,915
Sorghum Grain	20,320	37,560	Tons	46.00	1,727,760
Straw (Grain)	98,958	49,479	Tons	12.00	593,748
Straw (Flax)		16,600	Tons	15.00	249,000
Sugar Beets	47,000	1,024,600	Tons	14.25	14,600,550
Flowers					83,160
TOTAL					\$72,551,709

LIVESTOCK AND POULTRY

Production - Value - 1958-59

	Number	Total Live Wt. Gained	Unit	Per Unit	Value
Cattle & Calves	304,462	82,249,020	Cwt.	\$26.00	\$21,384,745
Sheep & Lambs	217,772	13,066,320	Cwt.	18.00	2,351,937
Hogs & Pigs	15,585				254,925
		(5,460 hd. 200# @ \$30.00) \$163,800.00		(10,125 hd. @ \$9.00) \$91,125.00	
Broilers & Fryers	3,500			.75 ea.	2,625
Other Chickens	19,300			.30	5,790
Eggs		347,400	Dozen	.38	132,012
Market Milk		247,007	Cwt.	5.16	1,274,556
Manufacture Milk		52,651	Cwt.	3.02	159,006
Wool		762,202	Pounds	.47	358,235
TOTAL					\$25,923,831

SEED CROPS

Non Certified - Acreage - Production Value - 1958-59

	Acreage	Per Acre	Total	Unit	Per Unit	Value
Alfalfa	20,350	350	7,631,350	Lbs.	.215	\$1,640,740
Barley	1,340	3,500	4,690,000	Lbs.	.025	117,250
Clover	1,155	600	693,000	Lbs.	.10	69,300
Flax	1,240	2,128	2,638,720	Lbs.	.07	184,710
Lettuce	285	160	45,600	Lbs.	1.00	45,600
Oats	60	2,000	120,000	Lbs.	.035	4,200
Onion	720	640	460,800	Lbs.	.95	437,760
Sorghum	500	3,500	1,800,000	Lbs.	.035	63,000
Other Veg. Seed			67,000	Lbs.	.90	51,400
Cotton Seed	495 T @ \$180					
	1,395 T @ \$250		1,890	Tons		437,850
						\$3,051,810

CERTIFIED SEED

Barley	1,117	3,440	3,842,480	Lbs.	.0275	105,668
Wheat	114	2,420	275,880	Lbs.	.033	9,104
New River Flax	60	1,600	96,000	Lbs.	.09	8,640
Imperial Flax	245	2,185	535,325	Lbs.	.075	40,149
Star Millet	40	547	21,180	Lbs.	.10	2,118
Brawley Sorghum	4	674	2,696	Lbs.	.10	270
DD 38 Milo	30	3,661	109,830	Lbs.	.045	4,942
D Imperial Kafir	22	1,040	22,280	Lbs.	.05	1,114
						\$ 172,005
						TOTAL 3,223,815

FRUIT AND NUT CROPS

Acreage - Production - Value - 1958-59

	Acres	Total	Unit	Per Unit	Value
Dates	123	590,400	Pounds	\$.15	\$ 88,560
Grapefruit	825	123,777	Boxes	1.05	129,965
Tangerines	249	35,161	Boxes	3.20	112,515
Oranges (Valencia)	310	34,687	Boxes	1.85	64,170
Pecans	94	159,800	Pounds	.35	55,930
Misc. Fruits	100	15,400	Boxes		51,800
					TOTAL \$ 502,940

MILLION DOLLAR CROPS

Carrots	1,608,779	Cotton Seed	2,061,767
Lettuce	19,026,944	Flax Seed	3,928,654
Cantaloupes	4,266,680	Alfalfa Hay - Meal & Pellets	19,722,310
Watermelons	2,273,250	Pasturage	1,950,367
Tomatoes	2,746,431	Sorghums	1,727,760
Barley	7,858,226	Sugar Beets	14,600,550
Cotton	19,240,342	Seed Crops	3,223,815



RECAPITULATION

	1958	1959
VEGETABLE CROPS	\$ 30,770,770.00	\$ 35,039,818.00
FIELD CROPS	65,155,698.00	72,551,709.00
LIVESTOCK & POULTRY	29,627,917.00	25,923,831.00
FRUIT & NUT CROPS	608,723.00	502,940.00
SEED CROPS	3,486,765.00	3,223,815.00
APIARY PRODUCTS	296,800.00	205,966.00
SOIL CONSERVATION PAYMENTS	710,673.00	247,434.00
TOTALS	\$130,837,346.00	\$137,695,513.00