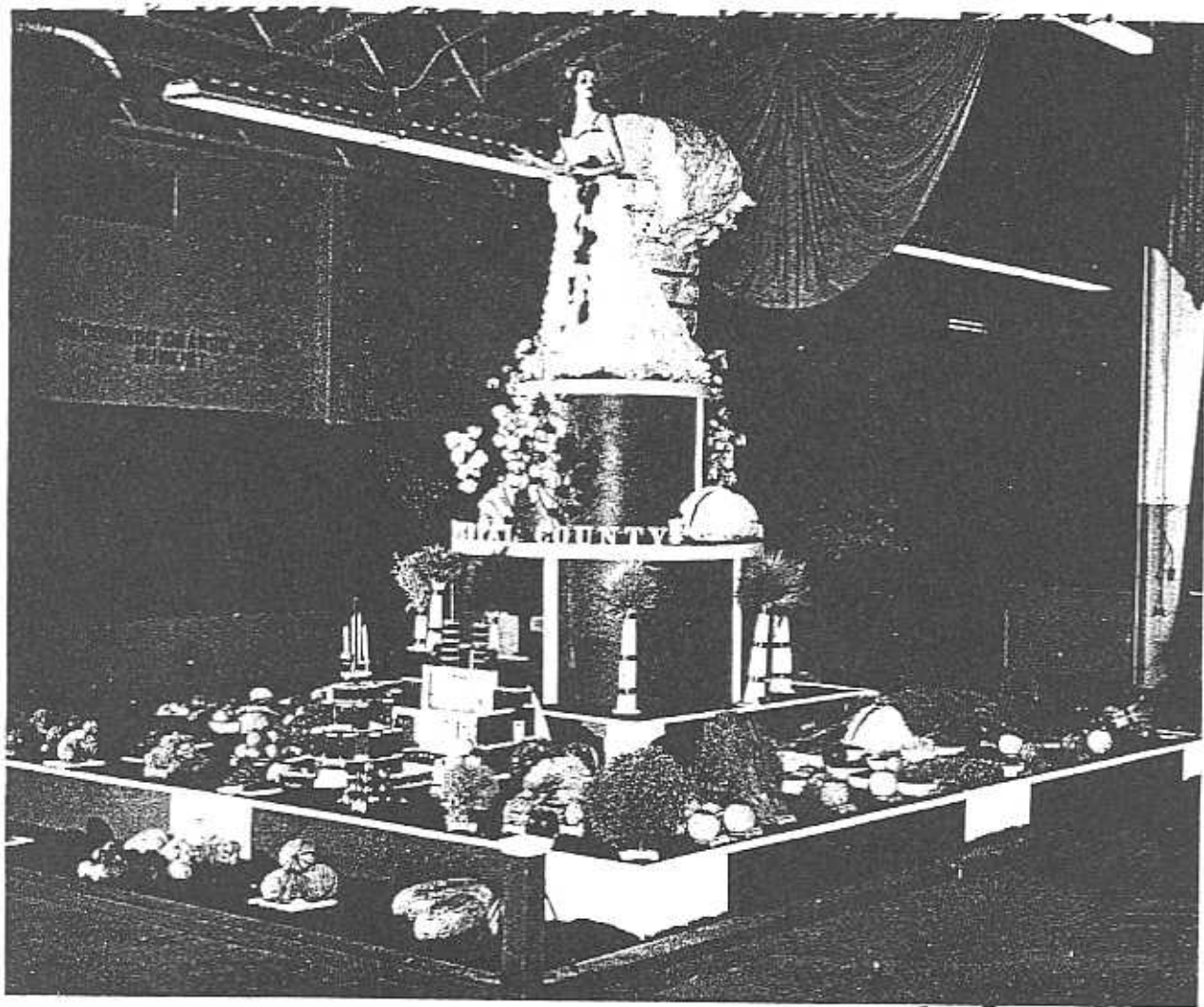


Agricultural Crop Report

COUNTY OF IMPERIAL

- 1960 -



*Office of the
Agricultural Commissioner*

Court House - El Centro



TO: THE HONORABLE BOARD OF SUPERVISORS
and
CHARLES PAUL, DIRECTOR OF AGRICULTURE

I herewith submit the annual report on the gross value of agricultural production in the County of Imperial for 1960 as required in Section 65.5 of the Agricultural Code.

It should be noted that these crop values include the costs of production and preparation for market, and in some cases, the costs of transportation to the packing house. It is intended to show the gross value of the agricultural commodity at its first sales point.

The gross value of agricultural production in Imperial County during the year of 1960 was \$160,107,676.00. This is an all time high for gross value of farm products. The increase in value is attributed to several items, notably cattle, cotton and alfalfa hay.

To those who worked so diligently to make this report as accurate as possible, we offer our sincere thanks.

Respectfully submitted,

Claude M. Finnell

CLAUDE M. FINNELL
Agricultural Commissioner

IMPERIAL COUNTY
BOARD OF SUPERVISORS

RAY LANGLEY, Chairman

TOM BOLEY

EARL CAVANAH

CHAS. W. KILGORE

SI CAREY

VEGETABLE CROPS - 1959 - 1960

	Year	Acres	Per Acre	Total	Unit	Per Unit	Value	
Asparagus	1960	1,701	61	103,761	Crt.	6.71	696,236	Barley
	1959			92,554		6.35	606,228	Cotton Lin
Beans	1960			14,100	Crt.	2.00	28,200	Cotton Se
	1959							
Broccoli	1960	490	240	117,600	Crt.	2.30	270,480	Flax Seed
	1959	487		115,706	Crt.	2.00	231,412	
Cabbage	1960	2,707	10	27,070	Tons	50.00	1,353,500	Alfalfa Ha
	1959	1,700		355,708	Crt.	1.45	515,776	
Carrots	1960	5,895	18	106,610	Tons	27.25	2,905,122	Meal & Pe
	1959	5,722		715,013	Crt.	2.25	1,608,779	Pasture
Carrots (processing)	1960							Screening
	1959			15,293	Tons	58.00	886,994	
Cucumber	1960	155	680	105,400	Lugs	2.05	216,070	Silage Cor
	1959	230		70,616	Lugs	1.90	134,170	
Cucumber (processing)	1960	115	6.2	713	Tons	89.00	63,457	Sorghum (.....
	1959							Straw
Endive	1960			17,200	Crt.	2.50	43,000	Sugar Beet
	1959							Flowers
Egg Plant	1960							
	1959			35,096	Crt.	1.65	57,908	
Garlic	1960	1,091	3.4	3,709	Tons	120.00	445,080	
	1959	528		756	Tons	340.00	260,440	
Garlic (processing)	1960							
	1959			1,903	Tons	170.00	323,510	
Lettuce	1960	40,257	308	12,399,156	48# Ctn.	2.15	\$26,658,185	
	1959	36,270		11,891,840	48# Ctn.	1.60	19,026,944	
Mustard Greens	1960							
	1959	111		29,970	Ctn.	2.50	74,925	
Cantaloupes	1960	7,427	118	878,386	88# Crt.	4.00	3,513,544	Cattle
	1959	5,463		775,760	88# Crt.	5.50	4,266,680	
Melons (other)	1960	91	136	12,376	48# Crt.	2.60	32,178	Sheep
	1959	16		3,816	48# Crt.	4.00	15,264	
Watermelons	1960	4,628	9.5	43,966	Tons	50.00	2,198,300	Hogs
	1959	4,330	10	43,300	Tons	52.50	2,273,250	
Onions (dry)	1960	3,364		2,859	Tons	40.00	106,360	Chickens (.....
	1959	855		334,122	50# Sacks	1.30	434,358	Chickens (.....
Onions (dehydrated)	1960							Eggs
	1959	600		10,208	Tons	26.00	265,408	
Onions (green)	1960							Milk (mark
	1959			11,188	4# Crt.	3.00	33,564	Milk (man
Okra	1960	32	8	256	Tons	260.00	66,560	Wool
	1959	49		128	Tons	260.00	32,280	
Romaine	1960	76	400	30,400	45# Crt.	2.10	63,840	
	1959			12,878	45# Crt.	1.25	16,097	
Squash	1960	887	264	234,168	22# Lugs	2.90	679,087	
	1959	1,465		386,726	22# Lugs	1.85	715,443	
Squash (other)	1960			125	Tons	70.00	8,750	
	1959			2,500	Crt.	3.50	8,750	
Sweet Corn	1960							
	1959			18,061	Crt.	2.40	43,346	
Tomatoes	1960	3,563	404	1,439,396	22# Crt.	2.70	3,886,369	
	1959	3,232		1,830,954		1.50	2,746,431	Honey
Tomatoes (lug pack)	1960							Bees Wax
	1959			187,650	30# Lugs	2.35	440,977	Pollination
Tomatoes (cannery)	1960							Other Items
	1959			2,227	Tons	24.00	53,448	
Mixed Vegetables	1960			89,948	40# Crt.	2.70	242,859	
	1959			2,500	40# Crt.	3.50	8,750	
TOTALS - 1960							\$43,510,741	
1959							\$35,039,818	

FIELD CROPS - 1959-1960

	Year	Acres	Per Acre	Total	Unit	Per Unit	Value
Barley	1960	82,603	2,600	107,384	Tons	\$ 44.00	\$ 4,724,896
	1959	98,958	—	170,831	Tons	46.00	7,858,226
Cotton Lint	1960	60,250	1,400	163,700	500 lb. bale	151.20	24,751,440
	1959	55,108	—	130,433	500 lb. bale	147.50	19,240,342
Cotton Seed	1960	—	—	64,047	Tons	43.00	2,754,021
	1959	—	—	50,287	Tons	41.00	2,061,767
Flax Seed	1960	16,200	34	550,800	Bu.	3.25	1,790,100
	1959	33,156	—	1,359,396	Bu.	2.89	3,928,654
Alfalfa Hay	1960	157,394	5.5	865,667	Tons	28.00	24,239,676
	1959	124,349	—	683,919	Tons	26.00	17,781,894
Meal & Pellets	1960	—	—	—	—	—	—
Pasture	1960	7,680	—	42,181	Tons	46.00	1,940,326
	1959	—	—	—	Acres	11.75	2,414,061
Screenings	1960	—	—	1,622	Tons	17.25	27,979
	1959	—	—	—	—	—	—
Silage Corn (Sorghum)	1960	6,647	17	112,999	Tons	5.00	564,995
	1959	4,287	—	107,183	Tons	5.00	535,915
Sorghum Grain	1960	25,896	2	51,792	Tons	43.00	2,227,056
	1959	20,320	—	37,560	Tons	46.00	1,727,760
Straw	1960	98,803	.5	49,402	Tons	12.25	605,174
	1959	—	.5	65,479	Tons	—	842,748
Sugar Beets	1960	48,058	19.9	956,354	Tons	14.00	13,388,956
	1959	47,000	—	1,024,600	Tons	14.25	14,600,550
Flowers	1960	—	—	—	—	—	—
	1959	—	—	—	—	—	83,160
TOTALS - 1960							\$77,487,354
1959							72,551,709

LIVESTOCK & POULTRY - 1959-1960

	Year	Head	Unit Gain	Total	Unit	Price	Value
Cattle	1960	341,500	3.15	1,075,725	Cwt.	\$24.68	\$26,548,893
	1959	304,462	—	8,224,902	Cwt.	26.00	21,384,745
Sheep	1960	240,042	.6	144,025	Cwt.	19.50	2,808,487
	1959	217,772	—	1,306,632	Cwt.	18.00	2,351,937
Hogs	1960	10,200	—	10,200	Head	36.70	374,340
	1959	15,585	—	15,585	Head	—	254,925
Chickens (broilers)	1960	3,650	—	3,650	Each	.75	2,737
	1959	3,500	—	3,500	Each	.75	2,625
Chickens (other)	1960	20,265	—	20,265	Each	.30	6,079
	1959	19,300	—	19,300	Each	.30	5,790
Eggs	1960	—	—	362,720	Doz.	.37	134,206
	1959	—	—	347,400	Doz.	.38	132,012
Milk (market)	1960	—	—	207,083	Cwt.	5.28	1,094,000
	1959	—	—	247,007	Cwt.	5.16	1,274,556
Milk (manufacturer)	1960	—	—	25,025	Cwt.	2.83	71,000
	1959	—	—	52,651	Cwt.	3.02	159,006
Wool	1960	—	—	8,360	Cwt.	51.00	426,360
	1959	—	—	7,622	Cwt.	47.00	358,235
TOTALS - 1960							\$31,466,102
1959							25,923,831

APIARY PRODUCTS - 1959-1960

	Year	Production	Unit	Per Unit	Value
Honey	1960	3,678,640	Lbs.	.095	\$349,470
	1959	1,901,250	Lbs.	.09	171,112
Bees Wax	1960	36,785	Lbs.	.45	16,553
	1959	25,450	Lbs.	.44	11,154
Pollination	1960	9,000	Colonies	3.50	31,500
	1959	6,000	Colonies	3.00	18,000
Other Items	1960	—	—	—	—
	1959	—	—	—	5,700
TOTALS - 1960					\$397,523
1959					\$205,966

SEED CROPS - CERTIFIED - 1959-1960

	Year	Acres	Per Acre	Total	Unit	Per Unit	Value	
Barley (Reg.)	1960	195	3,937	767,705	Lbs.	.0325	\$ 24,950	
	1959	1,117	3,440	3,842,480	Lbs.	.0275	105,668	
Barley (Cert.)	1960	668	2,664	1,779,552	Lbs.	.03	53,386	
	1959							
Wheat (Cert.)	1960	63	2,914	183,582	Lbs.	.0525	9,638	
	1959	114	2,420	275,880	Lbs.	.033	9,104	
Flax (Cert.)	1960	284	2,271	644,964	Lbs.	.075	48,372	
	1959	305	1,892	631,325	Lbs.		48,789	
Flax (Reg.)	1960	98	2,031	199,038	Lbs.	.09	17,913	
	1959							
Star Millet	1960							
	1959	40	547	21,180	Lbs.	.10	2,118	
Brawley Sorghum	1960							
	1959	4	674	2,696	Lbs.	.10	270	
DD 38 Milo	1960							
	1959	30	3,661	109,830	Lbs.	.045	4,942	
D Imperial Kafir	1960				Lbs.			
	1959		1,040	22,280	Lbs.	.05	1,114	
TOTAL -							1960	\$154,259
							1959	\$172,005

SEED CROPS - NON-CERTIFIED

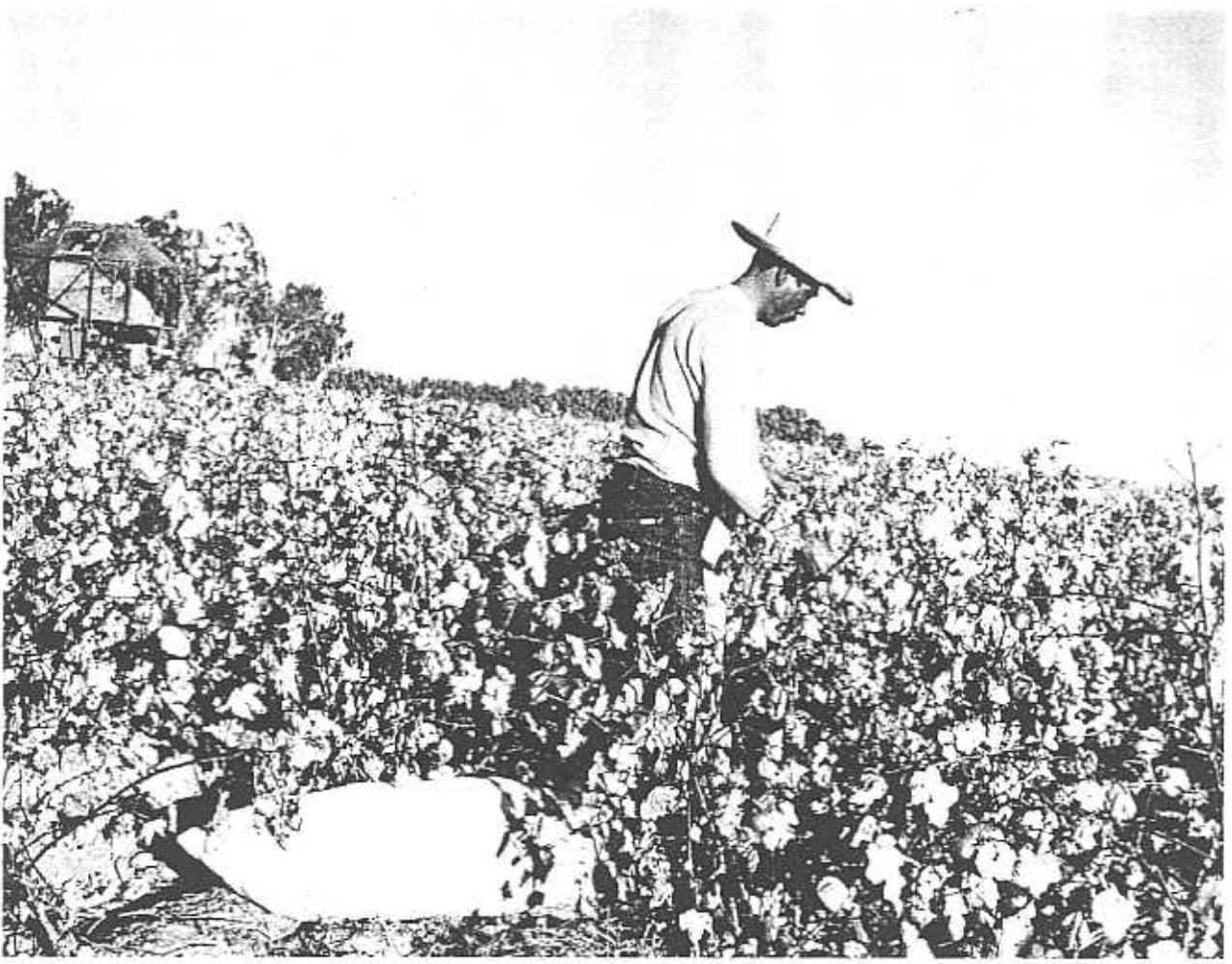
	Year	Acres	Per Acre	Total	Unit	Per Unit	Value	
Barley	1960	1,244	2,700	3,358,800	Lbs.	.0275	\$ 92,367	
	1959	1,340	3,500	4,690,000	Lbs.	.025	117,250	
Oats	1960	140	2,400	336,000	Lbs.	.036	12,036	
	1959	60	2,000	120,000	Lbs.	.035	4,200	
Wheat	1960	85	2,800	238,000	Lbs.	.048	11,424	
	1959							
Sorghum	1960	270	3,600	972,000	Lbs.	.03	29,160	
	1959	500	3,500	1,800,000	Lbs.	.035	63,000	
Flax	1960	1,200	2,290	2,748,000	Lbs.	.07	192,360	
	1959	1,240	2,128	2,638,720	Lbs.	.07	184,710	
Alfalfa	1960	30,848	310	9,562,880	Lbs.	.281	2,687,169	
	1959	20,350	350	7,631,350	Lbs.	.215	1,640,740	
Clover	1960	533	600	319,800	Lbs.	.072	23,025	
	1959	1,155	600	693,000	Lbs.	.10	69,300	
Cotton Seed	1960			9,620	Tons	210.00	2,020,200	
	1959			1,890	Tons		437,850	
Misc. Veg. & Flowers	1960			472,000	Lbs.	.96	453,120	
	1959			112,600	Lbs.		97,000	
TOTAL -							1960	\$5,520,921
							1959	\$3,051,810

FRUIT & NUT CROPS - 1959 - 1960

	Year	Acreage	Per Acre	Total	Unit	Per Unit	Value	
Dates	1960	106	2.4	254	Tons	\$300.00	76,200	
	1959	123		295.2	Tons	300.00	88,560	
Grapefruit	1960	759	8.25	6,262	Tons	48.00	300,576	
	1959	825		123,777	Boxes	1.05	129,965	
Oranges, Valencia	1960	353	13.3	4,828	Tons	65.00	410,380	
	1959	310		34,687	Boxes	1.85	64,170	
Oranges, Tangerines and Other	1960	280	5.4	1,512	Tons	200.00	302,400	
	1959	249		35,161	Boxes	3.20	112,515	
Pecans	1960	94	1,700	159,800	Lbs.	.40	63,920	
	1959	94		159,800	Lbs.	.35	55,930	
Mixed Fruits	1960			6,400	Boxes	3.25	20,800	
	1959	103		15,400	Boxes		51,800	
TOTAL -							1960	\$1,174,276
							1959	\$52,940

MILLION DOLLAR CROPS

Value		
\$ 24,950	Barley	\$ 4,724,896.00
105,668	Cotton Lint	24,751,440.00
53,386	Cotton Seed	2,754,021.00
9,638	Flax	1,790,100.00
9,104	Alfalfa Hay	24,238,676.00
48,372	Sorghum Grain	2,227,056.00
48,789	Sugar Beets	13,388,956.00
17,913	Pasture	2,414,061.00
2,118		
270		
4,942		
1,114		
\$154,259		
\$172,005		



Value	
\$ 92,367	
117,250	
12,096	
4,200	
11,424	
29,160	
63,000	
192,360	
184,710	
2,687,169	
1,640,740	
23,025	
69,300	
2,020,200	
437,850	
453,120	
97,000	
\$5,520,921	
\$3,051,810	

RECAPITULATION

Value		1959	1960
76,200	FIELD CROPS	\$ 72,551,709.00	\$ 77,487,354.00
88,560	VEGETABLE CROPS	25,039,818.00	43,510,741.00
300,576	LIVESTOCK & POULTRY	25,913,831.00	31,466,102.00
129,965	FRUIT & NUT CROPS	572,940.00	1,174,276.00
410,380	SEED CROPS	3,223,815.00	5,675,180.00
64,170	APIARY PRODUCTS	125,965.00	397,523.00
302,400	SOIL CONSERVATION PAYMENTS	247,434.00	385,500.00
112,515			
53,920			
55,930			
20,500			
51,800			
\$1,174,276	TOTALS	\$137,635,513.00	\$160,107,676.00
507,940			